

## Press Release

March 5, 2024

Contact:

Anna Leib

BAUER Aktiengesellschaft

BAUER-Strasse 1

86529 Schrobenhausen, Germany

Phone: +49 8252 97-3986

[public.relations@bauer.de](mailto:public.relations@bauer.de)

[www.bauer.de/en](http://www.bauer.de/en)

### **Ready for the future: Spesa carries out extensive hall renovation for long-distance energy pipe producer**

- Plastic sheath pipe manufacturer BRUGG Pipes invests in Nordhausen location
- Conversion of warehouse to production hall
- SPESA Spezialbau und Sanierung GmbH tasked with professional rehabilitation of hall pillars and ceilings

**Nordhausen, Germany** – They are a key component for the energy and heating revolution in Germany: Plastic sheath pipes. These are used to construct long-distance energy lines and entire district heat networks. The market is growing, and so is the demand for pipes for network expansion. To meet this increasing demand, the internationally leading long-distance energy pipe producer BRUGG Pipes relies on investments and modernizing. The company, which has its headquarters in Switzerland and plants in Wunstorf near Hannover, the town of Aargau in Switzerland as well as Poland, is currently investing in an extensive expansion and rehabilitation of the Nordhausen location. The capacity of the plant in Thuringia will be more than doubled in the future.

#### **Conversion instead of new building**

Instead of costly investments in a new building, however, the company is sustainably converting an existing warehouse into a production hall. In the course of these works, the first stage was to carry out roof insulation and rehabilitation. During this process, damaged sections with corroded reinforcement were detected on the hall pillars as well as defective spots on the underside of the ceiling. In order to correct these damages and ensure the stability and structural integrity of the production hall over the long term, SPESA Spezialbau und Sanierung GmbH was tasked by BRUGG German Pipes GmbH with the repair of the hall pillars and the underside of the ceiling.

#### **Pillars and walls**

First, more than 90 supporting pillars were extensively rehabilitated. After chiseling out damaged spots and preparing the subsoil with solid blasting, the edge formwork was constructed. Then sprayed mortar was applied in a thickness of 3 cm. The work concluded with a surface protection coating to increase durability. “The scope of services also included the structurally functional connection of several double pillars with a total of 14 wall slabs,” remarks Lars Prokosch, Project Manager at SPESA Spezialbau und Sanierung GmbH. “After the pillars were prepared, the interstitial space was filled with a concrete replacement system. Then – with additional structurally functional reinforcement – shotcrete was applied in a thickness of 7 cm as well as sprayed mortar in a thickness of 3 cm. Because the double pillars are reinforced with wall slabs, heavy wind loads arising in the future will be safely diverted.”

### Extensive rehabilitation

Along with the hall pillars, particular attention was paid to the rehabilitation of the hall ceiling. Over an area of 1,300 m<sup>2</sup>, the subsoil was prepared with solid blasting, corrosion protection was applied for the exposed reinforcements and reprofiling work was carried out on the damaged spots. The work concluded with troweling and a surface protection coating. An additional ceiling area of 2,600 m<sup>2</sup> with isolated damage spots and 500 m<sup>2</sup> of truss area were prepared with high-pressure water jets and then covered with a surface protection coating. "One particular challenge on this project was the extensive cleaning of the protective and working scaffolding after applying the sprayed mortar," remarks Lars Prokosch in conclusion. "The demolition works on the old floor slab and the excavation of the new floor slab were also carried out in parallel. All work phases had to be coordinated optimally." The work began in early July 2024 and successfully concluded in early December.

**Images: pressebild-press-image-hallensanierung-hall-renovation-nordhausen-spesa...**



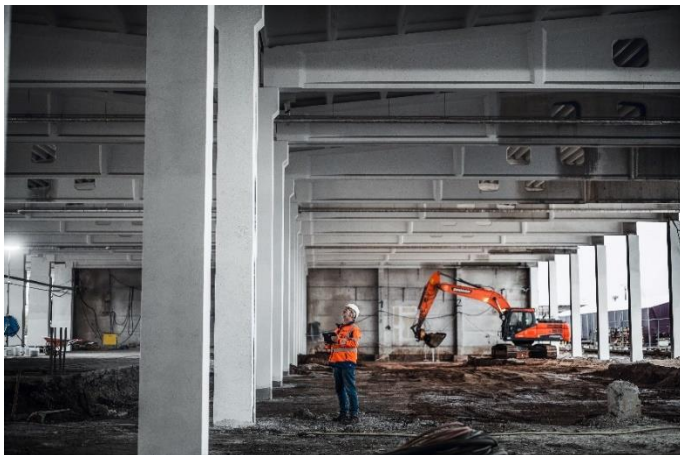
(1) In total, more than 90 supporting pillars were extensively rehabilitated.



(2) First, 500 m<sup>2</sup> of truss area were prepared with high-pressure water jets and then covered with a surface protection coating.



(3) To finish the surfaces, the applied coating was rubbed in by hand.



(4) The rehabilitation work was carried out in parallel to demolition and excavation work.

All images: © BAUER Group

### About BAUER Resources Group

The regionally organized BAUER Resources GmbH is aligned to projects around the world with its subsidiaries in Germany, Africa, the Middle East and South America and has extensive expertise in the areas of drilling services and water wells, environmental services, constructed wetlands, mining and rehabilitation. With more than 30 years of experience, BAUER Resources GmbH's Bauer Umwelt business division is one of the leading specialists in site remediation, soil remediation and waste disposal, both in the domestic market and internationally. As an expert in pollution reduction, Bauer Umwelt offers a diverse range of services for all environmental issues. Other companies of the BAUER Resources Group are GWE GmbH, SCHACHTBAU NORDHAUSEN GmbH and SPESA Spezialbau und Sanierung GmbH. More at <https://resources.bauer.de/en>.

### About Bauer

The BAUER Group is a leading provider of services, equipment and products dealing with ground and groundwater. The Group can rely on a worldwide network on all continents. The Group's operations are divided into three forward-looking segments with high synergy potential: Geotechnical Solutions, Equipment and Resources. Bauer profits enormously from the collaboration of its three business segments, enabling the Group to position itself as an innovative, highly specialized provider of products and services for demanding projects in specialist foundation engineering and related markets. Bauer therefore offers suitable solutions to the world's greatest challenges, such as urbanization, the growing infrastructure needs, the environment, as well as water. The BAUER Group was founded in 1790 and is based in Schrobenhausen, Bavaria. In 2023, it employed about 12,000 people and achieved total Group revenues of EUR 1.8 billion worldwide. More information can be found at <https://www.bauer.de/en>. Follow us on [Facebook](#), [LinkedIn](#), [Instagram](#) and [YouTube](#)!