

# Specialist Press Release

August 31, 2022

Contact:  
Katharina Weinmann  
BAUER Aktiengesellschaft  
BAUER-Strasse 1  
86529 Schrobenhausen, Germany  
Phone: +49 8252 97-3947  
[public.relations@bauer.de](mailto:public.relations@bauer.de)  
[www.bauer.de](http://www.bauer.de)

## **A transformation on the fly: Excavation pits on a former military site**

**Frankfurt am Main, Germany** – At one time, airships and military planes rolled down the runway and landing strip here day after day. Later on, the Rebstock site in Frankfurt am Main housed the Battelle Institute for Nuclear Physics until everything disappeared gradually in the 90s. Now this site will soon begin its new future after many years as a wasteland: in part as a residential quarter, and also as a site for a daycare center and an elementary school. But before the shell can be constructed, the Bauer Umwelt division of BAUER Resources GmbH in collaboration with BAUER Spezialtiefbau GmbH is constructing the 15,000 m<sup>2</sup> excavation pit for the last section of the district development.

In April 2022, a new chapter in the city's history was opened, or rather excavated. Due to the previous military history, the site first had to be scrutinized very carefully. "This is because former military sites often have a few surprises in the ground," remarks site manager Raphael Werner from the Bauer Umwelt Division of BAUER Resources GmbH based on his experience. Once everything was painstakingly examined and recorded, the actual excavation could begin. Up to a depth of 5 m, 30,000 t of material has been excavated already – a wide range has been found from unpolluted, undisturbed soil all the way to highly polluted material in some places. After excavation, the material is removed and brought to a suitable disposal center in the region. "There, most of the polluted soil first undergoes a microbiological treatment, as it cannot be disposed of without treatment due to the presence of organic pollutants," explains Raphael Werner. Around 4,000 truckloads are required for the total of 100,000 t from the excavation pit. This might seem simple, but it has to be executed under extreme time pressure. For this reason, many work steps and construction tasks are carried out simultaneously. "Everything has to mesh properly, and every move needs to be spot on," emphasizes foreman Hans Kurschat from the Bauer Umwelt Division of BAUER Resources GmbH.

While excavation was still ongoing, BAUER Spezialtiefbau GmbH worked using heavy equipment on the partially tied back sheet pile wall with an area of approx. 7,000 m<sup>2</sup> as well as the secant pile wall with a diameter of 1,500 mm down to a depth of nearly 30 m. The dewatering system including groundwater treatment plant, comprising six containers and two active filters as well as two sand charcoal filters, was also positioned and installed at the same time within a period of two weeks. Since its commissioning in August 2022, the plant cleans to 50 m<sup>3</sup> of water per hour – 300,000 m<sup>3</sup> of water in total by the end of operations.

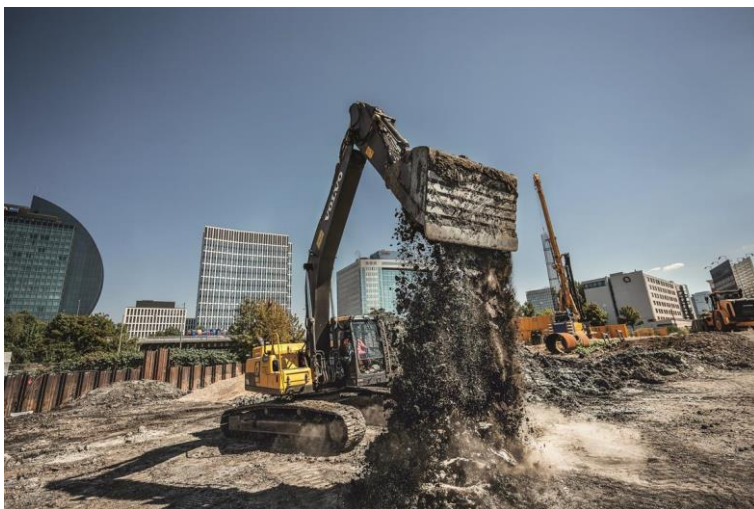
Raphael Werner and his team have already done an impressive job on the site. Until the conclusion of the project in January 2023, the rest of the material will be excavated and

roughly 15,000 m<sup>2</sup> of excavation base will be profiled, and subsequently sealed by the Spezialtiefbau team with roughly 19,000 running meters of vibrated stone columns. In addition, lightning protection and a granular subbase will be constructed and finally the turnkey excavation pit will be handed over for the regular construction phase. Starting in 2027, the former brownfield site will finally begin its new life with 373 apartments, a large underground garage, a daycare center and an elementary school. With less history, but a whole lot of style to compensate.

**Photos: 2022-08\_Bauer Umwelt\_Frankfurt...**



(1) Since April, the Bauer Umwelt Division of BAUER Resources GmbH has been constructing a 15,000 m<sup>2</sup> excavation pit on a former military site in Frankfurt am Main.



(2) A total of 100,000 t of material will be excavated up to a depth of 5 m.



(3) Forman Hans Kurschat (left) and Site Manager Raphael Werner

All images: © BAUER Group

### **About BAUER Resources Group**

The regionally organized BAUER Resources GmbH is aligned to projects around the world with its subsidiaries in Germany, Africa, the Middle East and South America and has extensive expertise in the areas of drilling services and water wells, environmental services, constructed wetlands, mining and rehabilitation. With more than 30 years of experience, BAUER Resources GmbH's Bauer Umwelt business division is one of the leading specialists in site remediation, soil remediation and waste disposal, both in the domestic market and internationally. As an expert in pollution reduction, Bauer Umwelt offers a diverse range of services for all environmental issues. Other companies of the BAUER Resources Group are the GERMAN WATER and ENERGY GROUP (GWE) – manufacturers of pioneering products and developers of integrated applications for well-drilling and geothermal – as well as SPESA Spezialbau und Sanierung GmbH and the Site Group for Services and Well Drilling Ltd. in Jordan. More at [bre.bauer.de](http://bre.bauer.de)

### **About Bauer**

The BAUER Group is a leading provider of services, equipment and products dealing with ground and groundwater. With over 110 subsidiaries, Bauer can rely on a worldwide network on all continents. The Group's operations are divided into three forward-looking segments with high synergy potential: Construction, Equipment and Resources. Bauer profits enormously from the collaboration of its three business segments, enabling the Group to position itself as an innovative, highly specialized provider of products and services for demanding projects in specialist foundation engineering and related markets. Bauer therefore offers suitable solutions to the world's greatest challenges, such as urbanization, the growing infrastructure needs, the environment, as well as water, oil and gas. The BAUER Group was founded in 1790 and is based in Schrobenhausen, Bavaria. In 2021, it employed about 12,000 people in around 70 countries and achieved total Group revenues of EUR 1.5 billion. BAUER Aktiengesellschaft is listed in the Prime Standard of the German Stock Exchange. More information can be found at [www.bauer.de](http://www.bauer.de). Follow us on [Facebook](#), [LinkedIn](#) and [YouTube](#)!